



Central Lakes
TRUST

A year of change
BEHIND EVERY GRANT IS A STORY

Annual Report
APRIL 2017 - MARCH 2018



Chair's Report

It is with great pleasure that I am able to report on another successful year for the Trust which includes exciting results, changes and developments.

Over the past 18 years the Trust has grown its asset base from the \$155 million bestowed by the Otago Central Electric Power Trust to assets totalling \$388 million (CLT - Parent entity only) and has granted over \$90 million back into our community.

2017/18 has been the most successful year yet for the Trust in terms of investment income, with a net surplus of \$28 million, drawn from all asset classes. This certainly enabled us to better respond to community need and distribute grant funds at a level greater than budgeted for during the financial year.

We have two newly appointed trustees, Linda Robertson of Queenstown, and Michael Sidey of Wanaka, brought on board for their specialised expertise to help steer our decision making. It is the first step in our new governance structure which will see another appointed trustee before the close of the 2018 year and our three-yearly election of five trustees in 2019. These appointments will protect the Trust in

terms of continuity in Governance during next year's election where four of six of the elected trustees are mandated to retire.

The latter part of our financial year saw a change in CEO with the appointment of Susan Finlay who has brought a renewed vision to the organisation.

The success of every organisation comes from the hard work and commitment from everyone involved. This is my opportunity to publicly thank our wonderful team and my fellow trustees, for their ongoing contribution and dedication to the Trust, and the delivery of our mission and values.

It is also important to acknowledge the wonderful investment support provided by our Investment Committee, chaired by Sir Eion Edgar.

We have made many positive changes this year, and I look forward to the successes of the year to come.

Tony Hill MNZM
Chair



Chief Executive's Report

In the past year we have seen nearly a 60% increase in both the number of grants (from 95 to 152) given out and the level of funds required to support the community. This is the first time in many years CLT has been over-subscribed. We haven't turned anyone away, however we have needed to take a breath and reaffirm our funding principles.

With the extreme growth and changes in the population demographic, the needs of our community have also changed, and it's our role to understand those needs to ensure the best use of our grant dollars.

Our board have spent considerable time considering our grants distribution policies and ensuring there is balance between the here and now (giving back to the community) and the long-term (funds in reserve). The Trust's investments have performed well over the last few years, so we have an opportunity to recognise that, and increase our grants budget going forward.

In saying that though, as funders we have a real responsibility to ensure we understand need rather than demand and respond accordingly in

terms of being fiscally responsible with community money.

Our new brand signifies this change in direction for CLT – it is in line with our values – and our collaborative approach of working with our community to ensure the best outcomes for the future of our region.

Of course our 100% ownership of Pioneer Energy Ltd is a key component of the important story CLT has to tell the community– Pioneer pay us a quarterly 'cash' dividend which goes a long way in funding our monthly grant distributions. We have worked very hard to ensure our brands sit comfortably together signifying the strong partnership that's in place between the two organisations.

We have achieved a lot in this first three months of new tenure and the team are very focused on bedding the change in over the next twelve months in order to better serve the community going forward.

Susan Finlay
Chief Executive

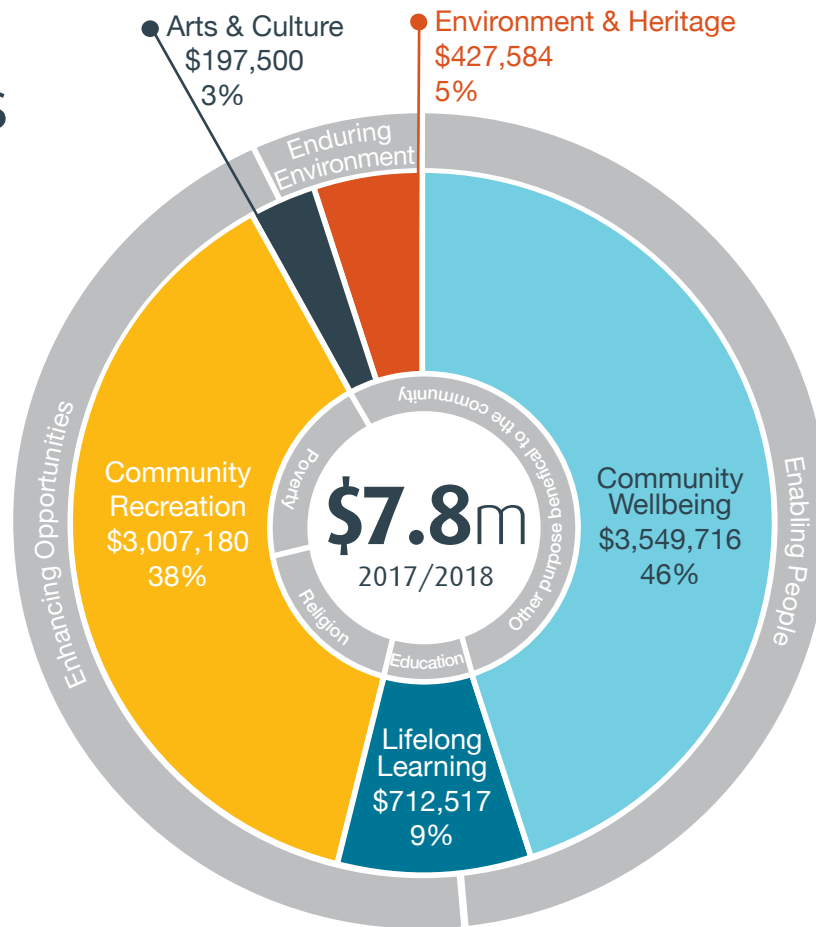
Central Lakes Trust is a charitable trust supporting our community, by granting funds for charitable purposes throughout the Central Lakes district.

Annually approximately \$6-9 million is granted to community organisations throughout the Trust's funding region, which spans most of Central Otago and Queenstown Lakes.

Growing Communities

Since inception in 2000, Central Lakes Trust has approved \$90.9 million in grants as at 31st March 2018. This financial year \$7.8 million was funded across our five sectors, a 58% increase compared to the previous year. A total of 152 grants were approved versus 95 in the previous year, a 60% increase.

Over 45% of funding in the 2017/18 year went to community wellbeing. Of those grants, a significant proportion were social services (54 out of 81), \$1.4 million of the funding allocation.



Wider Community Benefit

We focus on funding charitable projects in five key priority areas

LIFELONG LEARNING

To support projects and programmes that facilitate improved learning outcomes for people in our region by adding value to the sector, with a focus on community development and lifelong learning.

COMMUNITY WELLBEING

To support and strengthen community organisations which address social problems or improve health outcomes for the people in our region. This includes the advancement of religion.

COMMUNITY RECREATION

To support organisations that focus on community participation and engagement in recreation. Targeted support will be provided for those organisations that are aiming to increase participation of people from all ages.

ARTS & CULTURE

To support creative projects and organisations that aim to foster access to, engagement with, and experience in the arts.

ENVIRONMENT & HERITAGE

To support projects and organisations that preserve and promote the physical and cultural heritage of our region and that protect and enhance the environment in which we live.



Community benefit since inception in 2000, helping thousands of people across our region.

Growing Brand

At the end of our financial year we launched our first major rebrand since inception in 2000.

Our new logo reflects the unique colours of our region. It signifies a strong sense of moving forward and working together in partnership and collaboration with our community. It symbolises our core organisational values.

Be Prudent

Acting with wisdom and care to enhance the social and financial value of the trust

Be Fair

Being impartial

Be Open

Being transparent, approachable and collaborative

Be Proactive

Making things happen by identifying needs and, when necessary, initiating change

Be Collaborative

Working with others to identify priorities, improve performance and achieve great outcomes

Have Integrity

Doing things well through good judgement, sound ethics, professionalism and consistency



Communication, community engagement and sustainable outcomes are a high priority for Central Lakes Trust



Central Lakes Trustees:
Greg Wilkinson, Cath Gilmour, Dr Malcolm Macpherson, Tony Hill (Chair), Alex Huffadine, Bernice Lepper (Deputy Chair), Linda Robertson, Michael Sidey.



It is our job to be fiscally responsible with community money.

We know you want sustainable outcomes for the future of our region.

This means developing strong relationships to understand the ongoing changing needs of our community.

It also means focusing funding where it achieves the highest impact in people's lives or has the widest community benefit.



Susan Finlay, Chief Executive

Community

THE PEOPLE WE SUPPORT



CENTRAL OTAGO YOUTH PILOT EMPLOYMENT PROJECT

Successful Start to Youth Employment Programme Initiative

"As we know, school isn't for everyone", Melanie Mills, the Employment Project's Programme Manager says. "This programme is for any young person who has become disengaged from their learning, for whatever reason, to help them find out what they are passionate about and might like to 'do' and then help them get there." Both students currently enrolled in the programme, have already determined their career path and are passionate about what they want to do with their future. It's success so far is encouraging for the programme to continue beyond the 18 month pilot.

The programme has an education focus, with a structured and supported pathway into local employment and focuses on students aged between 13-16. Melanie says the aim is to personalise a vocational pathway for these students.

"I have been working as a building labourer. Me being able to do the project has changed my life a lot. I used to just sit in class muck around and wouldn't learn anything cos I wouldn't be allowed in class but when I'm on site its good cos the guys I work with are really helpful, they are always giving me heaps of information and their methods and little tricks."
- Youth Programme Student

LIFELONG LEARNING



ROUTEburn DART WILDLIFE TRUST

A land of birds - saving some of New Zealand's national treasures

Birds of ancient origins and unique features flourished in our land without competition or predation, until the first people arrived. Many are now extinct or have been threatened to extinction. The Routeburn Dart Wildlife Trust is a self-funding community conservation trust, working in partnership with DOC, to create an inland sanctuary for birds in the Routeburn and Dart Valleys. The braided river systems of this area are an internationally rare geographic feature of our landscape supporting several rare and specialised species. There are currently five native bird species that are under serious threat of extinction.

The installation of 120km predator traplines (including 599 traps over 15 distinct lines, targeting stoats and rats) to protect native bird species and improve nesting success is having promising results, even though it is early days. The long-term aim is to cover an area from Martins Bay on the West Coast to Lake Wakatipu.

Conservation and protection of the unique biodiversity in the Trust's region is an important part of the Trust's role.

ENVIRONMENT & HERITAGE



WANAKA SEARCH & RESCUE

Life-saving service run wholly by volunteers

Search & Rescue provide a vital service for the region helping the lost, missing and injured in our waters, hills and mountains in the Wanaka area. Wanaka LandSar are one of the busiest search and rescue groups in NZ. Approximately 90% of operations involve helicopters. Essential health and safety best practice training is provided annually to volunteers and responders.

"Keeping our 70-odd volunteers 'current' is essential, it's a bit like being 'match fit' for search and rescue. This means manoeuvres for getting in and out of a hovering helicopter, extracting patients on a helicopter strop, keeping up to date with advanced first aid, and being properly equipped for the mountainous terrain and weather we operate in. Central Lakes Trust for years now has been our principle supporter." Wanaka SAR Chair Bill Day says "Put simply, we couldn't mount 50 or so rescues a year at the level we do, without CLT's support."

COMMUNITY WELLBEING



Community

THE PEOPLE WE SUPPORT



ALEXANDRA MEN'S SHED

Men's Shed makes massive contribution to community

"The men of Alexandra Men's Shed collectively provide free or at cost assistance to a wide range of community organisations and individuals, fundraise on behalf of other charities, and coach, mentor or support individuals in a variety of practical subject areas. The vast number of projects that have the Men's Shed behind them, and the volunteer support they provide within the community is beneficial and well received throughout our region. To ensure the group can adequately accommodate the growing waiting list of members, Alexandra Men's Shed is building a new and larger premise. This in turn allows the men that join to give back to their community.

The shed will be a community centre, a centre of excellence, and a hub for a network of in-community activities," says Alexandra Men's Shed Trustee, Trevor Goudie. At least 20 community groups were supported by the work of the Men's Shed last year, just a few include; Alexandra Dunstan Lions, Omakau Church, Clyde Playcentre, Alexandra Thyme Festival.

COMMUNITY RECREATION



THE ORDER OF ST JOHN SOUTH ISLAND REGION TRUST BOARD

State-of-the-art Generation 3 Ambulance for the Wakatipu area

Vicci Lawrence our Grants Programme & Policy Manager was privileged to attend the dedication for the state-of-the-art Generation 3 ambulance; the first of its type for the Wakatipu area.

St John need to raise \$57,000 a day to keep its service going across New Zealand, even with government funding. This Gen3 ambulance enables St John to provide a crucial and highly valued service, and a safe and reliable first response to our local community members. It improves the quality of the Wakatipu fleet and forms a part of an ambulance replacement plan which sees aging ambulances; those that have travelled over 400,000kms, or older than eight years replaced. 12 are being replaced per year across the South Island. Gen3 ambulances have a slimmer design for narrower streets, have secure 3-point belts for travelling officers, as well as a new modern Stryker stretcher holding up to 312kgs of weight.

COMMUNITY WELLBEING



ARROWTOWN COMMUNITY & SPORTS CENTRE

Centre to become valuable resource for community

Arrowtown's growth and lack of community facilities means the impending arrival of the much-awaited multi-use Community & Sports Centre, will be well celebrated by community groups on its scheduled completion in September 2018.

At their roof shout on the 15th June, Simon Spark (pictured) acknowledged the Arrowtown Community Sports Centre located at Jack Reid Park is well underway. The centre will become a valuable resource for the growing Arrowtown community, especially as the Athenaeum community hall enters into its refurbishment phase. The sizable mixed-use facility contains rugby and scout stores, four separate smaller storage rooms for community groups, toilets, changing rooms and ablutions, kitchen and bar, as well as three interlinking community rooms that can be separate or open up into one large room, (seating approximately 150 – 160 people) and an exterior public toilet and will be a celebrated resource for many community groups.

COMMUNITY RECREATION

CHARITIES LAW

Poverty

Religion

Education

Other purposes beneficial to the community



CLT PRINCIPLES

Enabling People

Strengthening communities to be responsive, engaged and resilient

Enhancing opportunities

Enriching communities, enhancing community assets and facilities, creating community cohesion

Enduring Environment

Stewardship of the history and environment of the region



CLT SECTORS

Community Wellbeing

Life-long Learning

Community Recreation

Arts

Culture

Heritage

Environment

Community

THE PEOPLE WE SUPPORT



DUNEDIN COMMUNITY CARE TRUST

Supporting the Needs of Disabled People in Central Lakes District

Dunedin Community Care Trust supports disabled people to live in their own homes, in their own communities, under their own terms. The Trust has been responding to requests from families in Central Lakes district who cannot access disability support here, and are either considering moving their families, struggling on their own, or needing to pay for private services.

Already, within one month of the Service Manager for the district being appointed, two people are now able to return to their homes in the district, having previously shifted away to receive support.

Expanding the DCCT programme into the Central Lakes will better meet the needs of disabled people within the region and provide the opportunity to understand demand which will in turn provide better service to our community in the future.

The service has referrals from throughout the district and demand is growing as people become aware of the support they can offer.

COMMUNITY WELLBEING



OTAGO GOLDFIELDS HERITAGE TRUST

Restoration of Stewart Town Cottage & Menzies Dam

The remainder of a short-lived goldmining era, the Bannockburn Sluicing's are a very popular historic reserve and recreation area. The numerous walking/biking trails through the large scale water blasted landscape, tells a story of humankind's pursuit of possibility, and encourages us to actively engage in our local history.

Within the reserve, is the Stewart Town Cottage and Menzies Dam, both restored to former glory with only interpretational signage throughout the reserve yet to be installed. The restoration preserves the areas unique history for generations to come. The stone work on the dam has been stabilised and in some areas was completely rebuilt. The entire Stewarts Cottage has been re-pointed with hydraulic lime mortar (mixed with some of the original mortar saved from between the stones) on the outside and true-to-era mud mortar on the inside. A toilet has been installed and a bench seat now overlooks Target Gully. The Roofover (self-supported roof structure to protect the ruin) has been fitted. And the orchard pruned and tidied. The work will be well appreciated by the many locals and tourists (conservatively estimated at 15,000 annually) who frequent the walk/bike trail through the spectacular man-made landscape to learn more about the goldmining pioneers in our district.

ENVIRONMENT & HERITAGE



ARTS ON TOUR NZ

Bringing up-and-coming artists to the rural community

Arts On Tour plays at 60 venues around the country, from 40- 400 seat theatres. This year 40 artists applied for just 10 performance spots. "There is so much talent in New Zealand," states Steve Thomas, who for 35 years, has been ensuring performing artists are seen in the regions.

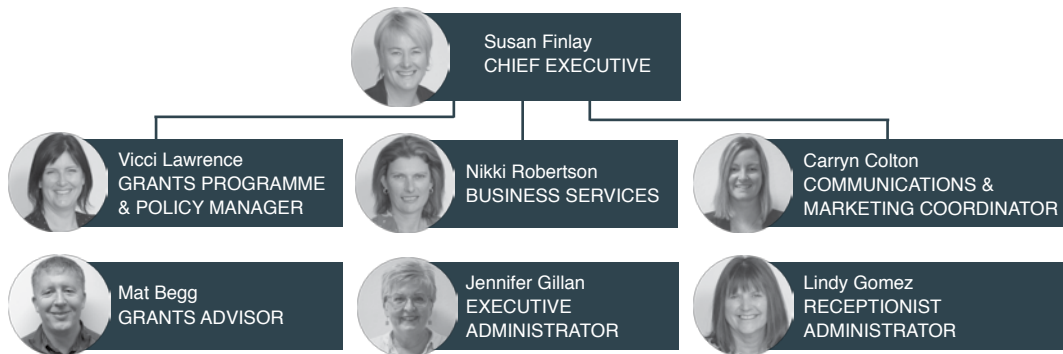
The tour focuses its programme on rural and remote communities, providing opportunities for these communities to access quality performances. Up-and-coming touring artists tour New Zealand visiting towns including Roxburgh, Alexandra, Wanaka, Queenstown, Tarras, Bannockburn, Cromwell and Lake Hawea.

An AOTNZ performer says, "I used to turn up in towns thinking I was the most important thing happening that night. I came to realise I was just a focal point for something much more important – the chance for a community to gather."

Ticket sales provide about 40% of revenue, the remainder is supported by Creative NZ, charitable and community trusts.

A documentary of this year's tour of Central Lakes towns is being filmed,

ARTS & CULTURE



Community

THE PEOPLE WE SUPPORT



LUMA LIGHT FESTIVAL

Free family friendly festival attracts 35,000 locals

LUMA is an award-winning arts and culture festival based in Queenstown. Transforming Queenstown's famous Botanic Gardens and lakefront into a dazzling display of glowing art, it uses Queenstown's unique alpine canvas, as a giant amphitheater for local, national and international talent to paint with light.

This free, family friendly event illuminated with art and sculpture, attracts a large number of visitors; and appeals to a wide-ranging audience; 35,000 locals from throughout our region, and a total of 40,000 – 50,000 visitors. Up until last year the event was entirely volunteer based.

The festival aims to educate our community in the arts and encourage awareness of the physical and cultural heritage of the region. The festival this year offered a dedicated school's area for primary school exhibitions, and a spot with the main artists for the high school to create an installation. With a dedicated Schools Programme Coordinator and the opportunity to showcase work on such a high profile stage, LUMA provides a fantastic opportunity for students to gain confidence in the arts, and a pathway into the Arts and Culture sector.

ARTS & CULTURE



CLT TERTIARY SCHOLARSHIPS

Young minds rewarded for efforts

Fifty students from nine secondary schools were presented Central Lakes Trust tertiary education scholarships in 2017, each valued at \$2,500. Over the years 384 young people have received the benefit of a CLT scholarship, a total amount of \$926,500.

The scholarships aim to assist students from our region to study at a tertiary institution.

A grateful recipient says, "...The Central Lakes Trust Scholarship Programme is a great scholarship programme that gives a large number of students from the Central District a reward for the efforts they have put in through their years of school along with a financial aid to begin tertiary study.... Once again thank you to the Central Lakes Trust for this scholarship."

Applicants must be between 16 - 19 years of age and have lived in the Central Lakes Trust region for a minimum of two years at the time of application. The selection criteria consider various factors including the applicant's academic record, all-round qualities and achievements.

LIFELONG LEARNING



SPORT OTAGO'S SWIM SAFE PROGRAMME 2018

Teaching all our children water safety to save lives

Drowning is the fourth highest cause of accidental death in New Zealand. Of the 104 drownings in New Zealand in 2017, 88 were preventable. We have had a 16% increase in drownings over the past five years. Supporting safety in and near the water by teaching our children to swim and water safety skills, sees benefit throughout the entire Central Lakes region.

The Sport Otago swim schools programme sees all primary school children throughout the Central Lakes Trust region receive 10 swimming lessons annually. The aim is to improve each child's confidence and ability to survive in the water, and is a joint initiative between Central Lakes Trust, Sport Otago, CODC, QLDC and the schools in the Central Lakes Trust region.

Feedback commends the programme. "I just wanted to let you both know how impressed I am with the current water safety programme. ...Even though my daughter has plenty of skills in the water, this programme takes this to another level....Having had children at The Terrace since 2005, the current water safety programme being offered, is, in my opinion, the most impressive and worthwhile yet."

COMMUNITY RECREATION

Investment Snapshot 2017/2018

CENTRAL LAKES TRUST – PARENT ENTITY ONLY

Summary Group Financial Statements

CENTRAL LAKES TRUST GROUP

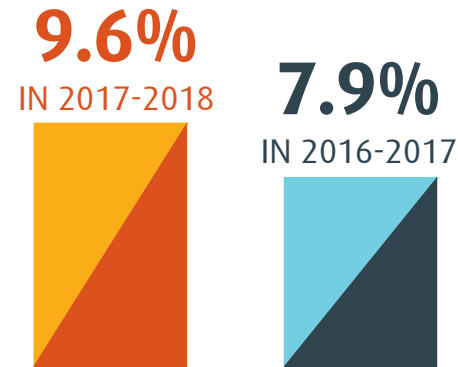
Trust Funds



\$380m
IN 2017-2018

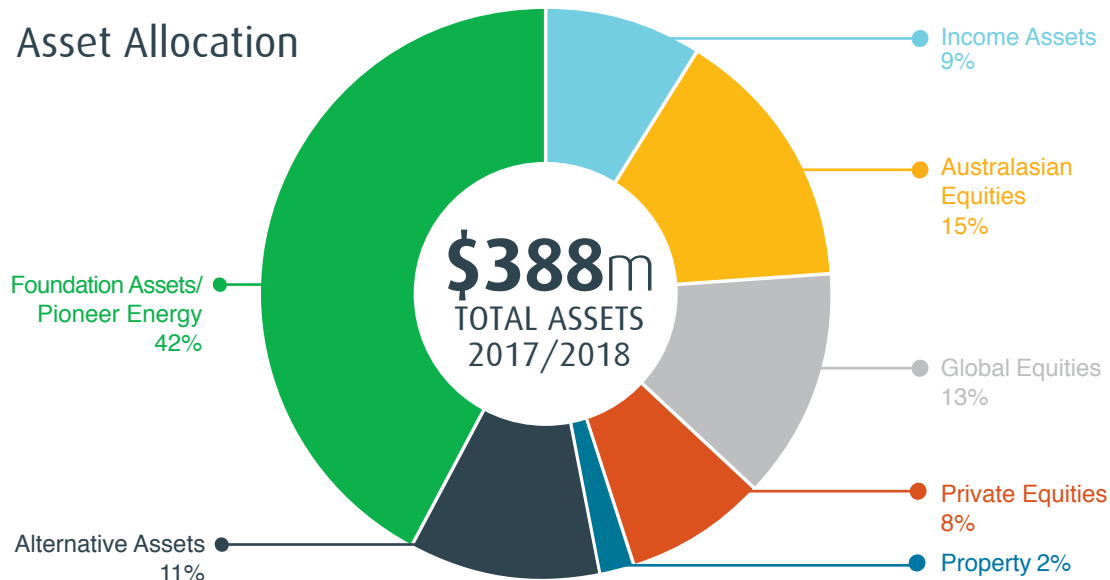
\$352m
IN 2016-2017

Investment Return



(Inclusive of dividend and interest received from Pioneer Energy Limited)

Asset Allocation



Central Lakes Trust Group SUMMARY OF FINANCIAL STATEMENTS

Summary Consolidated Statement of Comprehensive Revenue and Expenses for the year ended 31st March 2018

	Group 2018 \$000	2017 \$000
Revenue from Exchange Transactions		
Investment Revenue	28,139	20,716
Generation, Retail and Energy	124,815	99,539
Other Revenue	1,261	1,110
	<u>154,215</u>	<u>121,365</u>
Less Expenses		
Cost of Sales-Electricity	93,674	68,972
Depreciation & Amortisation Expense	7,511	7,381
Finance Costs	5,491	5,270
Operating Items	17,554	18,288
	<u>124,230</u>	<u>99,911</u>
Net Operating Surplus	29,985	21,454
Less Grants Approved	(7,894)	(4,982)
Add Grants Rescinded	191	277
	<u>22,282</u>	<u>16,749</u>
Gains/(losses) on Derivatives	520	(1,462)
Share of Surplus from Joint Ventures	4,778	5,116
Net Surplus (Deficit) for the year	<u>27,580</u>	<u>20,403</u>
Other Comprehensive Revenue or Expense		
Item that may be reclassified subsequently to surplus or deficit		
Cash Flow Hedges		
Fair Value gain/(loss) on Interest Rate Swaps	(1,392)	1,371
Fair Value gain/(loss) on Foreign Exchange Contracts	8	(17)
Total Comprehensive Revenue or Expense for the year	<u>26,196</u>	<u>21,757</u>

Net Surplus (Deficit) for the year attributable to:		
Trust	27,650	20,476
Minority interests	(70)	(73)
	<u>27,580</u>	<u>20,403</u>
Total Comprehensive Revenue and Expense for the year attributable to:		
Trust	26,266	21,830
Minority interests	(70)	(73)
	<u>26,196</u>	<u>21,757</u>

Trustee

Trustee

These Summary Financial Statements should be read in conjunction with the full financial statements, which are available at www.clt.net.nz.

Investment Subcommittee



Sir Eion Edgar Chair



Mark Taylor



Tony Hill



Greg Wilkinson



Susan Finlay

Summary Group Financial Statements

CENTRAL LAKES TRUST GROUP

Central Lakes Trust Group SUMMARY OF FINANCIAL STATEMENTS

Summary Consolidated Statement of Changes in Net Assets/Equity for the year ended 31st March 2018

Group	General Funds \$000	Capital Maintenance Reserve \$000	Population Growth Reserve \$000	Minority Interests \$000	Hedging Reserve \$000	Total \$000
Balance at 1 April 2016	181,848	65,977	29,971	660	(2,431)	276,025
Total Comprehensive Revenue & Expense for the year	20,476	-	-	(73)	1,354	21,757
Transfer from General Funds	(14,193)	5,133	9,060	14	-	14
Balance at 31 March 2017	188,131	71,110	39,031	601	(1,077)	297,796
Total Comprehensive Revenue & Expense for the year	27,650	-	-	(70)	(1,384)	26,196
Transfer from General Funds	(12,553)	1,485	11,068	-	-	-
Balance at 31 March 2018	203,228	72,595	50,099	531	(2,461)	323,992

These Summary Financial Statements should be read in conjunction with the full financial statements, which are available at www.clf.net.nz.

Central Lakes Trust Group SUMMARY OF FINANCIAL STATEMENTS

Summary Consolidated Statement of Financial Position as at 31st March 2018

	Group	
	2018 \$000	2017 \$000
Assets		
Non Current:		
Investments	288,818	268,739
Investment Property	4,820	4,185
Property, Plant & Equipment	83,754	87,910
Intangibles	20,260	20,415
Derivative Financial Assets	22,396	16,046
Current	47,769	41,404
	467,817	438,699
Liabilities		
Non-current	114,660	114,283
Current	29,165	26,620
	143,825	140,903
Net Assets	323,992	297,796
Represented by:		
Trust Capital & Reserves - attributable to the Trust	323,461	297,195
Trust Capital & Reserves - attributable to the Minority Interests	531	601
Closing Equity	323,992	297,796

Summary Consolidated Cash Flow Statement for the year ended 31st March 2018

	Group	
	2018 \$000	2017 \$000
Opening Cash	3,873	5,414
Net Cashflows from Operating Activities	6,378	3,207
Net Cashflows from Investing Activities	(6,265)	(29,498)
Net Cashflows from Financing Activities	-	24,750
	113	(1,541)
Closing Cash	3,986	3,873

Explanatory Note

The summary financial information has been derived from, and should be read in conjunction with, the Central Lakes Trust Group annual financial statements (the 'full financial statements'). The full financial statements were authorised for issue by the Trustees on 13th August 2018 are available at www.clf.net.nz or a copy can be requested by contacting the Trust on 0800 00 11 37. The accounting policies used in these financial statements are included in the notes to the full financial statements. The full financial statements comply with Not For Profit Public Benefit Entity Accounting Standards (PBE Standards (NFP)) and have been prepared in accordance with Tier 1 PBE Standards (NFP). The full financial statements have been audited by Deloitte Limited and an unqualified opinion given. The summary financial information cannot be expected to provide as complete an understanding as provided by the full financial statements.

These Summary Financial Statements should be read in conjunction with the full financial statements, which are available at www.clf.net.nz.

Grants Approved April 2017 – March 2018

LIFELONG LEARNING

Wanaka Community Toy Library	Purchase New Toys	\$2,369
Wanaka Preschool Early Childhood Centre	Solar Panels & Heat Pumps	\$12,340
Dunstan High School	Robotics Programme	\$18,107
Teviot Valley Educare Centre Inc	Renovation to Centre premises to meet needs and ERO review	\$20,000
Otago Polytechnic - Trades Academy	Central Campus Trades Academy Equipment	\$175,000
Central Otago Principals Association	Referral Programme 2018	\$89,730
Central Otago Education Centre (COEC Ltd)	Promotion campaign to increase membership	\$19,350
Cromwell College on behalf of Pilot Employment Project	Central Otago Youth Pilot Employment Project	\$75,000
CO REAP 2018 Courses	2018 Courses	\$43,310
Mount Aspiring Outdoor Education Centre Trust	Purchase 30000 L plastic water tank	\$2,700
CLT Tertiary Scholarships	Tertiary Scholarships Awarded 2018	\$125,000
Environmental Education for Resource Sustainability Trust	Paper4Trees Programme for Schools	\$584
Heartland Life Education Trust	Operational Funding 2018 Multi-Year 1 of 3	\$20,000
(Life Education Trust Heatland Otago Sthnd Inc)		
Glenorchy Primary School	Outdoor Classroom	\$6,800
Cromwell Combined Churches Trust	Bibles in schools 2018	\$2,227
Wakatipu High School	External Storage Facility at new site	\$100,000
		\$712,517

COMMUNITY WELLBEING

Chairman's Discretionary Fund	Donation to Roxburgh Flood Clean Up / Working Bee	\$500
Cromwell Upper Clutha Catholic Parish	Redevelop the Rear of the Cromwell Catholic Parish Hall	\$60,000
The Parenting Place CT (was previously Inc)	Programme Expenses 2018	\$1,959
Wanaka Riding For Disabled	Purchase of New Saddle and Coaching Seminar Cost	\$2,766
Age Concern Southland	Operational Funding 2017/18	\$17,500
Disability Information Service Inc	Set up costs for DIS Mobile Service	\$10,500
Disability Information Service Inc	Pilot for one year part time role based in Central Otago	\$4,000
Alexandra Baptist Church	Building renovation in North Wing	\$155,000
Central Otago Health Inc	SimMan Resus Manikin	\$39,048
Central Otago Friendship Network	Operational Funding 2017/18	\$9,000
Central Otago Friendship Network	Operational Funding 2018/19	\$12,000
Alexandra Community Advice Network	Operational Funding 2017/18 Multi-Year 2 of 3	\$7,000
The Order of St John South Island Region Trust Board	New Ambulance for St John Wakatipu	\$100,000
Hospice Southland Charitable Trust	Operational funding 2017 18	\$33,500
Cromwell Resource Centre Trust	Operational Funding 2017 18	\$28,333
Wakatipu Youth Trust	Operational 2018-19	\$73,750
Salvation Army Queenstown Community Ministries	Operational Funding 2017 18	\$20,000
Kahu Youth Trust	Operational 2018-19	\$57,500
Cromwell Youth Trust	Operational 2017-18	\$42,500
Alexandra Community Advice Network	Operational Funding 2018/19 Multi-Year 3 of 3	\$7,000
Salvation Army Alexandra	Operational Funding 2017/18 Multi-Year 1 of 3	\$42,821
Royal New Zealand Foundation of the Blind	Operational 2017 18	\$2,500
Alexandra Council of Social Services	CO-Chairs Attendance at National CAN AGM	\$2,000
Dunedin Community Law Centre	Operational Funding 2017/18 Multi-Year 3 of 3	\$16,000
Kahu Youth Trust	Operational Funding 2017/18 Multi-Year 3 of 3	\$57,500
Stand Childrens Services (NZ Fdn for Child and Family Health & Dev)	Operational 2017/18 for parenting programme.	\$3,000
Volunteering Otago Trust	Operational 2017/18 (six months 1 October to March 18)	\$27,500
Otago Community Hospice Trust	Operational Funding 2017/18	\$30,000
Southland Multiple Sclerosis Society	Operational Funding 2018	\$2,000
Central Otago Compassionate Friends (Inc)	Operational funding 2017/18	\$12,000
Volunteering Otago Trust	Operational Funding 2018/19	\$25,000
Rotary Club of Alexandra	Defibrillator	\$1,999

QLDC - Lake Hayes Pavilion -	Lakes Hayes Pavilion - Defibrillator	\$2,061
QLDC - Baby Memorial	Baby Memorial at Lower Shotover Cemetery	\$25,500
Parent to Parent New Zealand Inc (Southland)	Sibling Support Camp	\$3,340
Volunteering Otago Trust	Operational 2017/2018	\$27,500
Cromwell Youth Trust	Operational 2018-19	\$42,500
Wanaka Search & Rescue Inc	Capital Equipment and Essential Training	\$25,530
Teviot Valley Community Christian Trust	Operational 2018-19	\$28,750
Community Patrols of NZ Charitable Trust - Cromwell	Cromwell Patrol Vehicle	\$15,000
Dunedin Community Care Trust	2 Year Project to support the needs of disabled people in CLT Region	\$135,000
Wakatipu Youth Trust	Operational 2017-18	\$73,750
Teviot Valley Community Christian Trust	Operational 2017/18	\$28,750
Central Otago Victim Support	Emergency Support Fund	\$10,000
Presbyterian Support Otago	Operational Funding 2017/18	\$62,000
Clyde & Districts Lions Club Charitable Trust	Hygiene and Distraction Packs for Dunstan Hospital	\$2,000
CLT Resthome Goldfish	Aquaria in Resthomes 2017-18	\$13,410
Brain Injury Association Otago	Operational Funding 2018/19 Multi-Year 3 of 3	\$10,000
Cromwell Volunteer Fire Brigade	Purchase a new operational support vehicle	\$30,000
Alexandra-Clyde Neighbourhood Support (Inc)		
Charitable Trust	Operational funding 2017 18	\$650
Alzheimers Society Otago Inc.	Operational Funding 2018/19 Multi-Year 2 of 3	\$16,000
Royal New Zealand Plunket Society Inc	Operational Funding 2018	\$25,000
(Otago Plunket Community Services)		
Presbyterian Support Southland	Operational Funding 2017/18 Multi-Year 3 of 3	\$20,000
Wanaka Community House Charitable Trust	Upper Clutha Community House Facility in Wanaka	\$1,400,000
Cromwell Community Welfare Trust	Operational Funding 2018 Multi-Year 3 of 3	\$4,000
Wakatipu Abuse Prevention Network	Operational 2017 18	\$73,300
Cancer Society of New Zealand,		
Otago & Southland Division Inc.	Operational Funding 2018/2019	\$50,000
Roman Catholic Diocese of Dunedin -		
Catholic Social Services	Operational Funding 2018 Multi-Year 1 of 3	\$35,000
Muscular Dystrophy Assn Southern Region Branch	Operational Funding 2017 18 (19 months)	\$4,750
Otago Multiple Sclerosis Society Inc	Operational Funding 2018	\$3,195
Alexandra & Districts Youth Trust	Operational 2017-18	\$57,500
Central Otago Victim Support	Operational Funding 2017 18	\$10,000
Queenstown Citizens Advice Bureau	Operational Funding 2017/18 Multi-Year 3 of 3	\$9,000
Stroke Foundation of New Zealand Ltd	Operational 2017/18	\$5,000
CLT Rest Home Entertainment	CLT Rest Home Entertainment 2018/2020 (one time payment)	\$3,000
Happiness House Trust	Operational Funding 2017/18 Multi-Year 3 of 3	\$38,000
Age Concern Otago Incorporated	Operational Funding 2018	\$32,000
Disabilities Resource Centre Southland		
Charitable Trust	Operational 2017 18	\$10,000
Uruuruwhenua Health Inc	Upgrade IT System	\$5,000
Presbyterian Support Otago	Emergency Heating Fund 2017/18	\$20,000
Alexandra Senior Citizens Centre	Operational Funding 2017/18 Multi-Year 3 of 3	\$10,000
Central Otago Search and Rescue	Equipment and training	\$24,000
Parent to Parent New Zealand		
Incorporated (Otago)	Operational 2018 Regional Support and Sibling Workshop	\$5,000
CLT Resthome Goldfish	Aquaria in Resthomes 2018/19 Multi-Year 1 of 3	\$13,410
Alpine Community Development Trust	Operational Funding 2018	\$51,000
Central Lakes Regional Youth Trust	Operational Funding 2017/18 Multi-Year 3 of 3	\$25,000
Ronald McDonald House South Island	380 Room Nights at Ronald McDonald Chch and Invgl	\$57,000
Central Lakes Regional Youth Trust	Operational Funding 2016/17 Multi-Year 2 of 3	\$25,000
Parkinsonism Society Otago	Operational 2018	\$6,144
Anglican Family Care Centre	Operational 2017 / 2018	\$15,000
Alexandra & Districts Youth Trust	Operational 2018-19	\$57,500
		\$3,549,716

COMMUNITY RECREATION

CODC - Cromwell Memorial Hall	Redevelopment Cromwell Memorial Hall	\$1,400,000
Warbirds over Wanaka Community Trust	2018 Airshow	\$50,000
Poolburn School	Multi Sport Surface	\$34,833
Project Litefoot Trust	Implement the Bannockburn Bowling Club into Project LiteClub	\$1,800
Lake County A & P Society	2018 Lake Hayes A & P Show	\$15,000
QLDC - Queenstown Gardens Commemorative Playscape	Contribution to Shortfall for Qtn Gardens Commemorative Playscape	\$100,000
CODC - Cricket Covers Molyneux Park	Cricket Covers for Molyneux Park	\$20,000
Special Olympics Lower South Regional Council	Special Olympics Snow Sports 2017	\$3,000
Alexandra Men's Shed	Construct a New Shed	\$200,000
Upper Clutha Tracks Trust	Hawea Flat to Hawea River Track	\$80,000
Wanaka Associated Football Club Inc	Storage and Changing Room Facility at Kellys Flat Reserve	\$40,000
Wanaka Yacht Club Inc	Equipment for Youth Development Programme	\$30,275
QLDC - Allenby Community Park	Allenby Community Park Development - Mount Iron Wanaka	\$64,000
QLDC - Review of Community Groups & Community Facilities	Review of Community Groups and Facilities in QLDC	\$10,000
Winter Games New Zealand	Volunteers & Para-skiing	\$39,844
Alexandra Golf Club Inc	Defibrillator	\$2,138
Alexandra Golf Club Inc	Grass Grub Resolution, Replace 4 wheel drive, Replace utility vehicle	\$5,893
Sport Otago	Sports and Recreation Facilities Strategy	\$45,000
CODC - Pioneer Park Playground	Pioneer Park Playground Equipment	\$40,664
Arrowtown Community & Sports Centre	Arrowtown Community & Sports Centre shortfall funding	\$200,000
Sport Otago	Hockey facilities review	\$20,000
Rotary Club of Queenstown Charitable Trust	Tuckers Beach Trail Project	\$83,200
QLDC - Shotover Country Pump Track	Shotover Country Pump Track	\$20,000
Wanaka Golf Club	Car park reseal and fire safety compliance upgrade	\$18,000
Showgrounds Community Sports Centre Trust	Upper Clutha Rugby Clubrooms Refurbishment Project	\$200,000
Sport Otago	Swim Safe 2018 Multi-year 3 of 3 (in principle)	\$79,080
Cromwell Bowling Club	Shade Sails and Artificial Grass	\$17,000
Wanaka Squash Rackets Club Inc	Feasibility Study for Relocation of the Club	\$20,000
Arrowtown Bowling Club	New carpet playing surface	\$96,000
Sport Otago	Operational Funding 2017/18 Multi-Year 2 of 3	\$27,500
Alexandra Bowling Club Inc	New Mower and Replacement Shade Cloth	\$7,780
Challenge Wanaka Sports Trust	Event Expenses 2018	\$15,000
Lowburn Hall Society	Construct storage extension and replace chairs and crockery/cutlery	\$21,173
		\$3,007,180

ARTS & CULTURE

Lake Dunstan 'Gold N Notes' Music Trust	2017 Hoe Down	\$10,000
Showbiz Queenstown Inc	Stage Production of Mamma Mia in Queenstown 8-11 Nov 2017	\$20,000
Central Otago Regional Choir	Spring 2017 and Autumn 2018 Concert Series	\$5,000
Southern Lakes Arts Festival Trust	2018 Aspiring Conversations	\$10,000
Woolon Creative and Fashion Soc Inc	Woolon Creative Fashion Event and Awards 2017	\$3,000
Arts on Tour NZ Trust	2018 Arts on Tour Programme and Documentary Project	\$64,000
Alexandra Musical Society	2017 Production of the musical "Grease"	\$7,500
Arts on Tour NZ Trust	Operational Funding for Arts on Tour 2017	\$3,000
NZ Mountain Film Festival Charitable Trust	2018 NZ Mountain Film & Book Festival	\$2,000
Michael Hill International Violin Competition	Michael Hill International Violin Competition 2017	\$7,000
LUMA Light Festival Charitable Trust	LUMA Light Festival 2018	\$60,000
Pisa Range Music Society Inc.	River Range Music Festival 2018	\$6,000
		\$197,500

ENVIRONMENT & HERITAGE

Rotary Club of Alexandra	Development of Post Office Garden	\$20,368
CODC - Millers Flat/Roxburgh War Memorials	War Memorials, Flag Poles	\$2,070
Lakes District Museum	Increased storage facility for collections	\$90,000
CODC - Ophir Hall	Ophir Hall Kitchen Renovation	\$22,500
CODC - Clyde Museum	Feasibility Study for the Clyde Museum Buildings	\$20,771
CODC - Becks Hall Memorial Foyer	Memorial Foyer and Kitchenette Renovation	\$13,212
Teviot Valley 2007 Society	Hercules Flat (Roxburgh) Railway Water Tower Restoration	\$30,000
Routeburn Dart Wildlife Trust	Buy and install a new set of trap lines around the Dart & Rees Rivers	\$100,000
Wanaka Residents Association Inc	Bullock Creek Stream Boardwalk	\$44,252
Otago Goldfields Heritage Trust Inc	Restore Stewarts Cottage and Menzies Dam	\$84,411
		\$427,584



Total grants approved throughout our region 2017/18

190 Waenga Drive, PO Box 138, Cromwell 9342, Central Otago, New Zealand
Freephone: 0800 00 11 37 | Phone: 03 445 9958 | Email: info@clt.net.nz

Proud owner of **Pioneer**
energy
